

ZONE CHANGE SKETCH
PART OF LOT 11, CONCESSION 6
GEOGRAPHIC TOWNSHIP OF WEST GARAFRAXA
TOWNSHIP OF CENTRE WELLINGTON
COUNTY OF WELLINGTON

SCALE 1 : 3000
 0 30 60 120 180 meters
 VAN HARTEN SURVEYING INC.

KEYMAP



SUBJECT PROPERTY

NOTES:

1. THIS IS NOT A PLAN OF SURVEY AND SHOULD NOT BE USED FOR REAL ESTATE TRANSFERS OR MORTGAGES.
2. SUBJECT LANDS ARE ZONED CAMPGROUND (CG.35.5), EXTRACTIVE INDUSTRIAL (M3), ENVIRONMENTAL PROTECTION (EP) & ENVIRONMENTAL PROTECTION OVERLAY.
3. SUBJECT LANDS HAVE AN OFFICIAL PLAN DESIGNATION OF PRIME AGRICULTURAL, RECREATIONAL, GREENLANDS & CORE GREENLANDS.
4. DISTANCES ON THIS PLAN ARE SHOWN IN METRES AND CAN BE CONVERTED TO FEET BY DIVIDING BY 0.3048.
5. DIMENSIONS ON THIS SKETCH ARE APPROXIMATE AND HAVE NOT BEEN VERIFIED BY SURVEY.
6. OWNER: DONALD VALLERY

THIS SKETCH WAS PREPARED ON THE 2nd DAY OF MAY 2019

Jeffrey E. Buisman
 JEFFREY E. BUISMAN
 ONTARIO LAND SURVEYOR

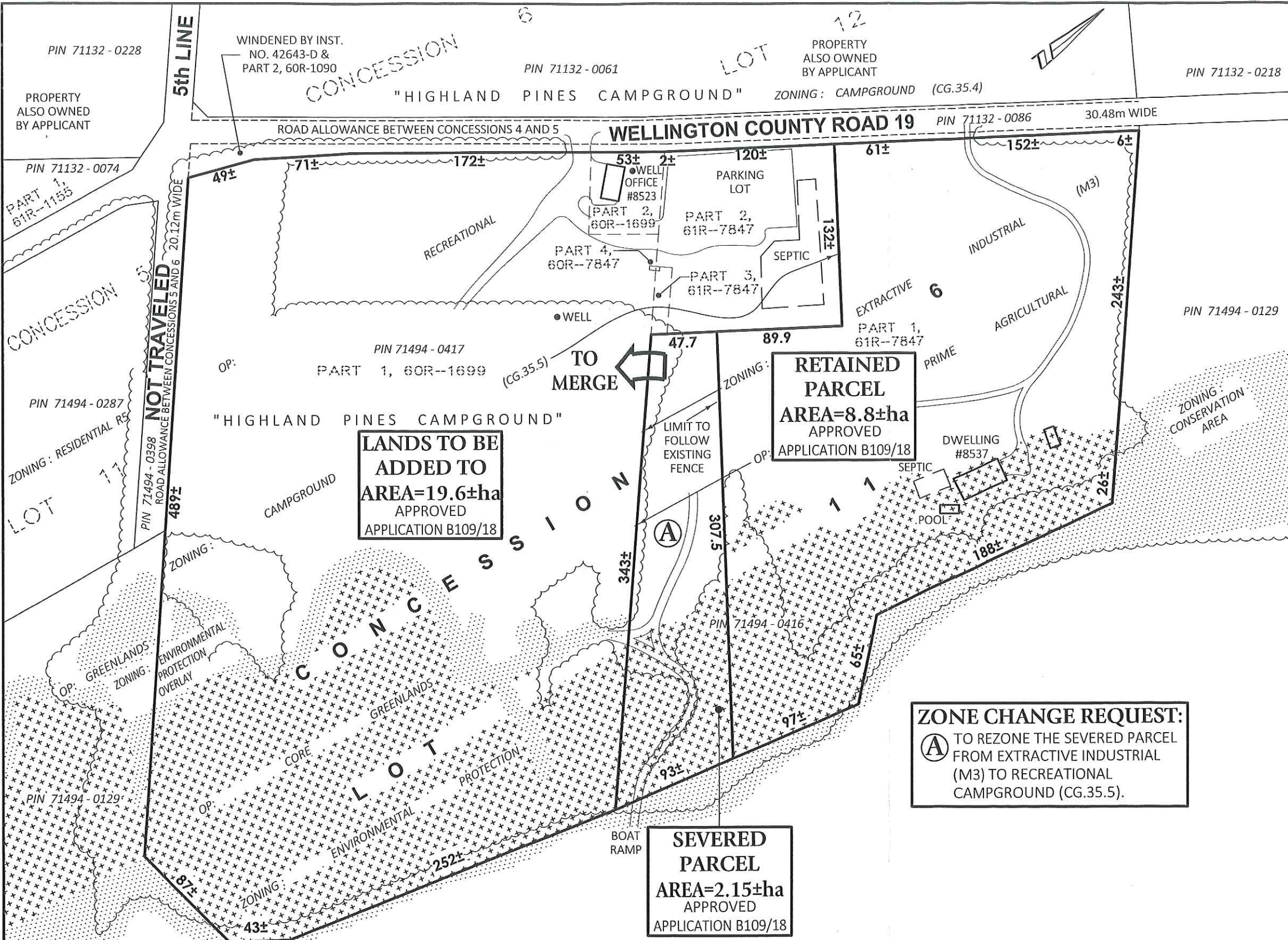
Van Harten
 SURVEYING INC.
 LAND SURVEYORS and ENGINEERS

| | | |
|-------------------------------|----------------------------|---------------------------------|
| Kitchener Ph: 519-742-8371 | Guelph Ph: 519-821-2763 | Orangeville Ph: 519-940-4110 |
|-------------------------------|----------------------------|---------------------------------|

www.vanharten.com info@vanharten.com

DRAWN BY: ARN CHECKED BY: JEB PROJECT No. 26363-18

May 02, 2019-10:19am
 G:\WEST GARAFRAXA\Con6\Acad\ZONE LOT 11 (VALLERY) UTM.dwg



LANDS TO BE ADDED TO AREA=19.6±ha APPROVED APPLICATION B109/18

RETAINED PARCEL AREA=8.8±ha APPROVED APPLICATION B109/18

SEVERED PARCEL AREA=2.15±ha APPROVED APPLICATION B109/18

ZONE CHANGE REQUEST:
 (A) TO REZONE THE SEVERED PARCEL FROM EXTRACTIVE INDUSTRIAL (M3) TO RECREATIONAL CAMPGROUND (CG.35.5).

O.P. : GREENLANDS ZONING: ENVIRONMENTAL PROTECTION OVERLAY
 O.P. : CORE GREENLANDS ZONING: ENVIRONMENTAL PROTECTION