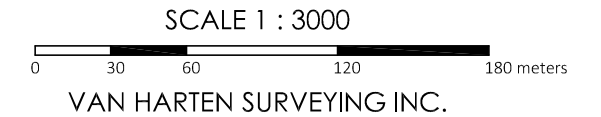
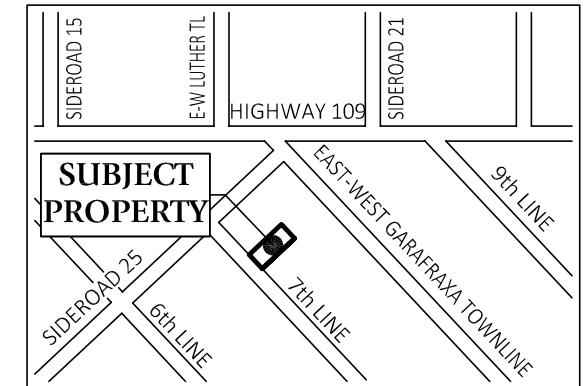


ZONE CHANGE SKETCH
PART OF LOT 24, CONCESSION 8
 GEOGRAPHIC TOWNSHIP OF WEST GARAFRAXA
 TOWNSHIP OF CENTRE WELLINGTON
 COUNTY OF WELLINGTON



KEYMAP



NOTES:

- THIS IS NOT A PLAN OF SURVEY AND SHOULD NOT BE USED FOR REAL ESTATE TRANSFERS OR MORTGAGES.**
- SUBJECT LANDS ARE ZONED AGRICULTURAL, ENVIRONMENTAL PROTECTION & ENVIRONMENTAL PROTECTION OVERLAY.
- SUBJECT LANDS HAVE AN OFFICIAL PLAN DESIGNATION OF PRIME AGRICULTURAL & CORE GREENLANDS.
- DISTANCES ON THIS PLAN ARE SHOWN IN METRES AND CAN BE CONVERTED TO FEET BY DIVIDING BY 0.3048.
- DIMENSIONS ON THIS SKETCH ARE APPROXIMATE AND HAVE NOT BEEN VERIFIED BY SURVEY.
- PROPERTY OWNER: MATT WOODS.

THIS SKETCH WAS PREPARED
ON THE 25th DAY OF NOVEMBER 2021

JEFFREY E. BUISMAN
ONTARIO LAND SURVEYOR

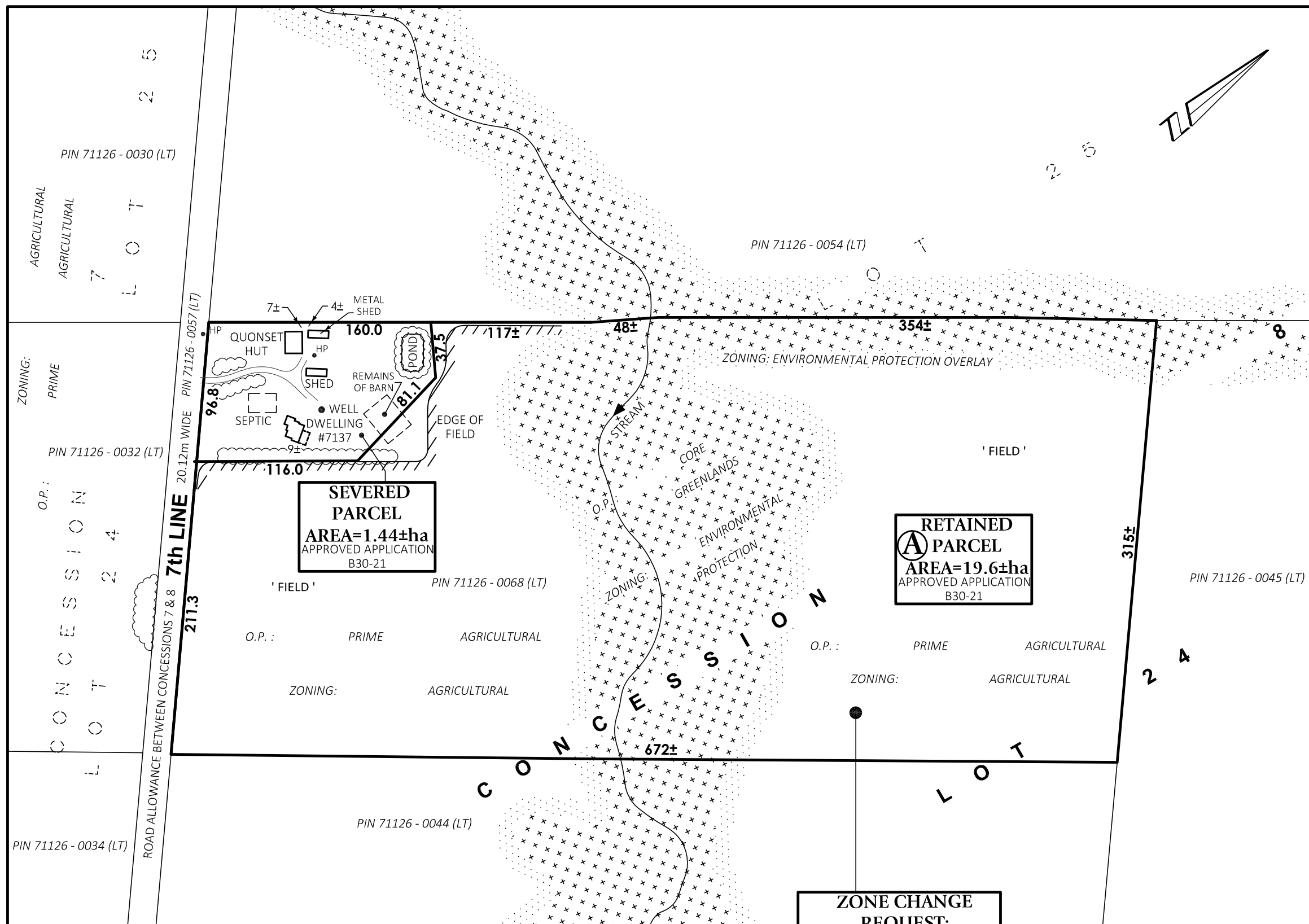
Van Harten
SURVEYING INC.
LAND SURVEYORS and ENGINEERS

| | | |
|--|----------------------------|---------------------------------|
| Kitchener/Waterloo Ph: 519-742-8371 | Guelph Ph: 519-821-2763 | Orangeville Ph: 519-940-4110 |
|--|----------------------------|---------------------------------|

www.vanharten.com info@vanharten.com

| | | |
|---------------|-----------------|----------------------|
| DRAWN BY: ARN | CHECKED BY: JEB | PROJECT No. 28935-20 |
|---------------|-----------------|----------------------|

Nov 25, 2021-10:04:06 AM
 G:\WEST GARAFRAXA\Con8\ACAD\ZONE LOT 24 (WOODS) UTM.dwg



ZONE CHANGE REQUEST:
 (A) TO REZONE THE RETAINED PARCEL FROM AGRICULTURAL TO A SPECIALIZED AGRICULTURAL TO PROHIBIT A RESIDENTIAL DWELLING.

| | |
|----------------------------------|--|
| O.P. : CORE GREENLANDS | O.P. : PRIME AGRICULTURAL |
| ZONING: ENVIRONMENTAL PROTECTION | ZONING: ENVIRONMENTAL PROTECTION OVERLAY |

PIN 71126 - 0030 (LT)
 AGRICULTURAL
 AGRICULTURAL
 LOT 7
 ZONING: PRIME
 PIN 71126 - 0032 (LT)
 O.P. : PRIME
 CONCESSION 7
 LOT 4
 ROAD ALLOWANCE BETWEEN CONCESSIONS 7 & 8
 7th LINE
 20.12m WIDE
 PIN 71126 - 0057 (LT)
 211.3
 PIN 71126 - 0044 (LT)

7±
 4± METAL SHED
 160.0
 QUONSET HUT
 HP
 SHED
 REMAINS OF BARN
 81.1
 37.5
 96.8
 SEPTIC
 WELL #7137
 DWELLING
 9±
 116.0
 EDGE OF FIELD
 'FIELD'
 PIN 71126 - 0068 (LT)
 O.P. : PRIME AGRICULTURAL
 ZONING: AGRICULTURAL

PIN 71126 - 0054 (LT)
 354±
 ZONING: ENVIRONMENTAL PROTECTION OVERLAY
 'FIELD'
 CORE GREENLANDS
 ENVIRONMENTAL PROTECTION
 O.P. : PRIME AGRICULTURAL
 ZONING: AGRICULTURAL
 PIN 71126 - 0045 (LT)
 315±
 672±
 CONCESSION 8
 LOT 24
 PIN 71126 - 0044 (LT)