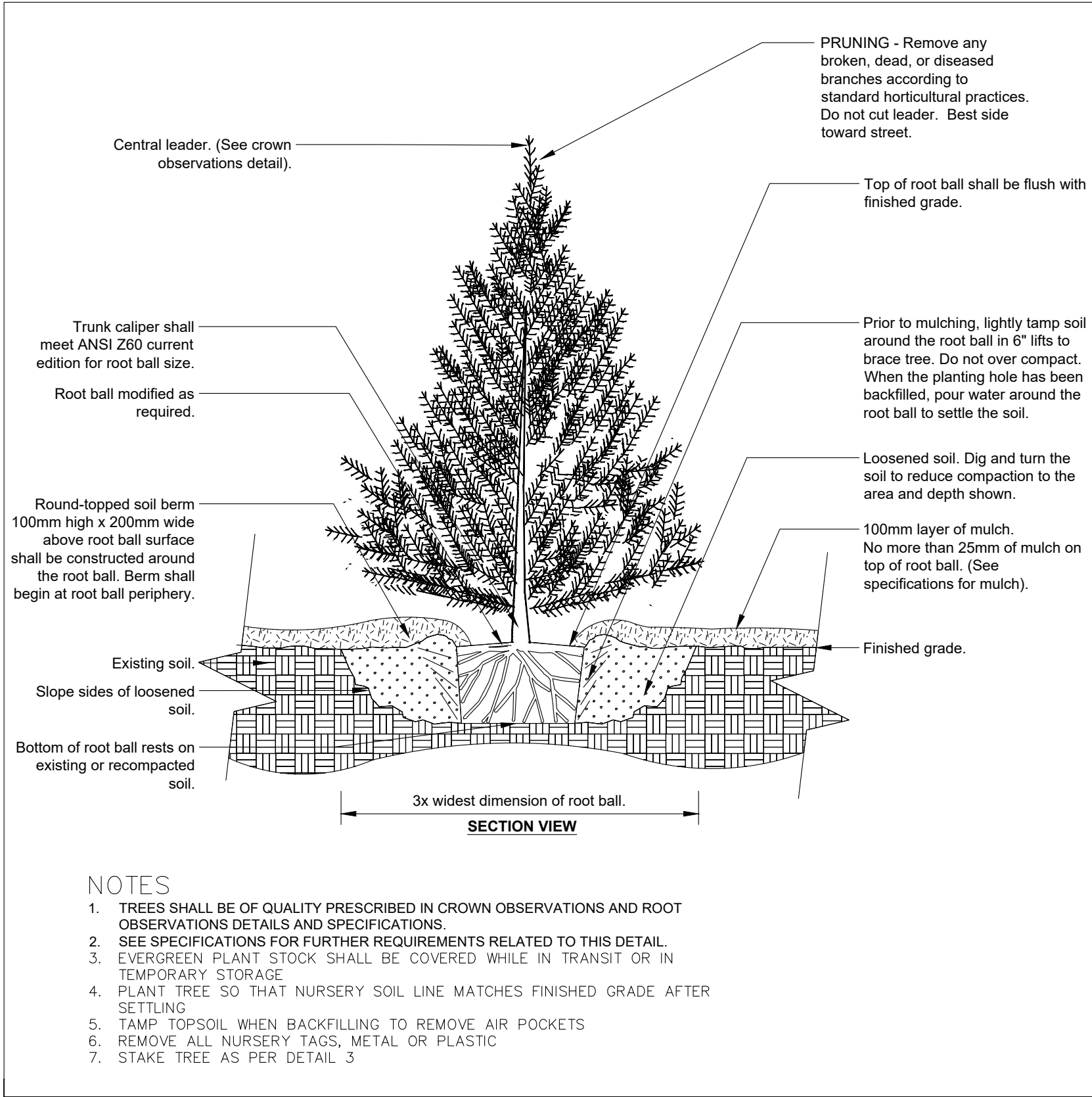
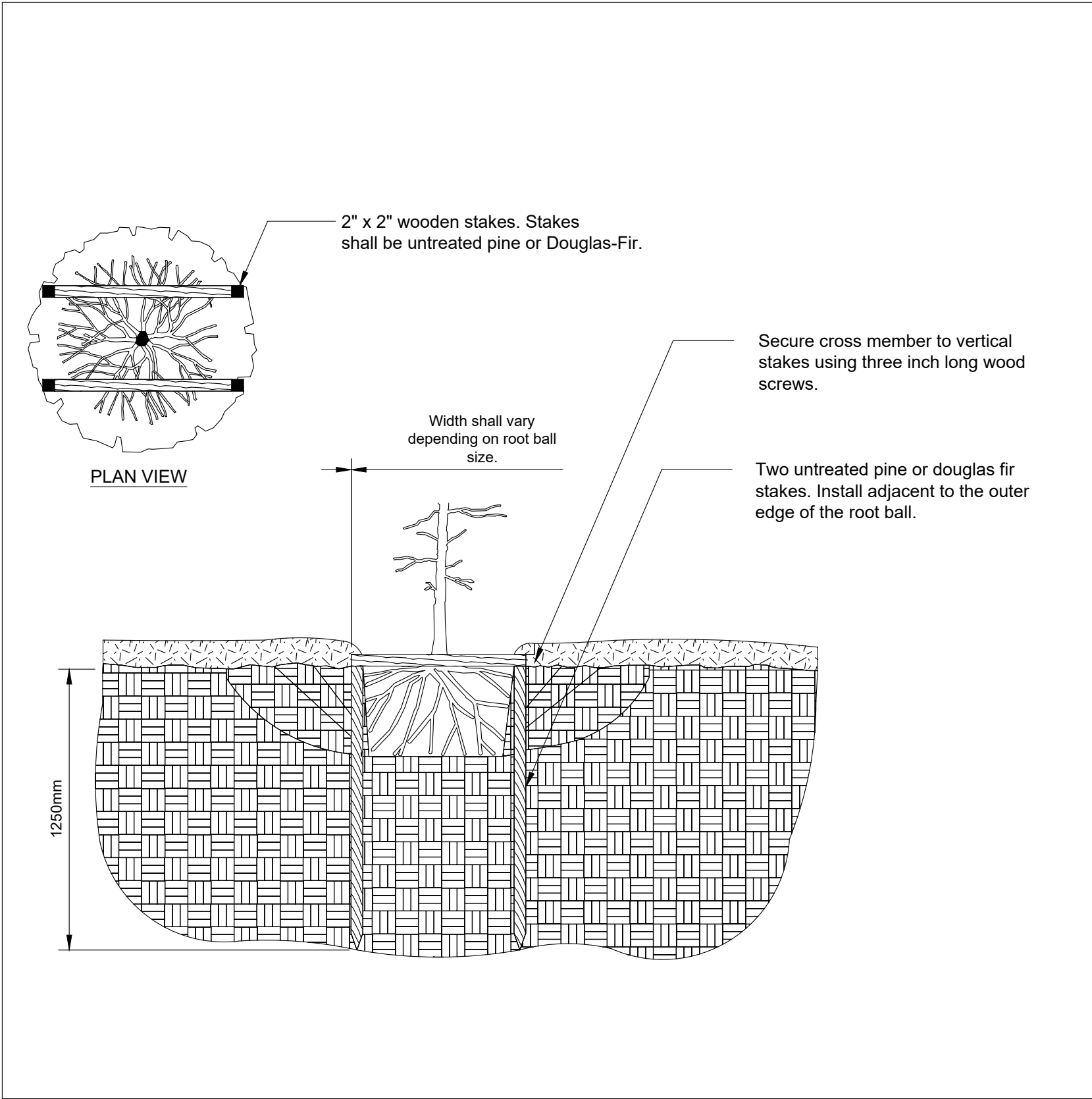


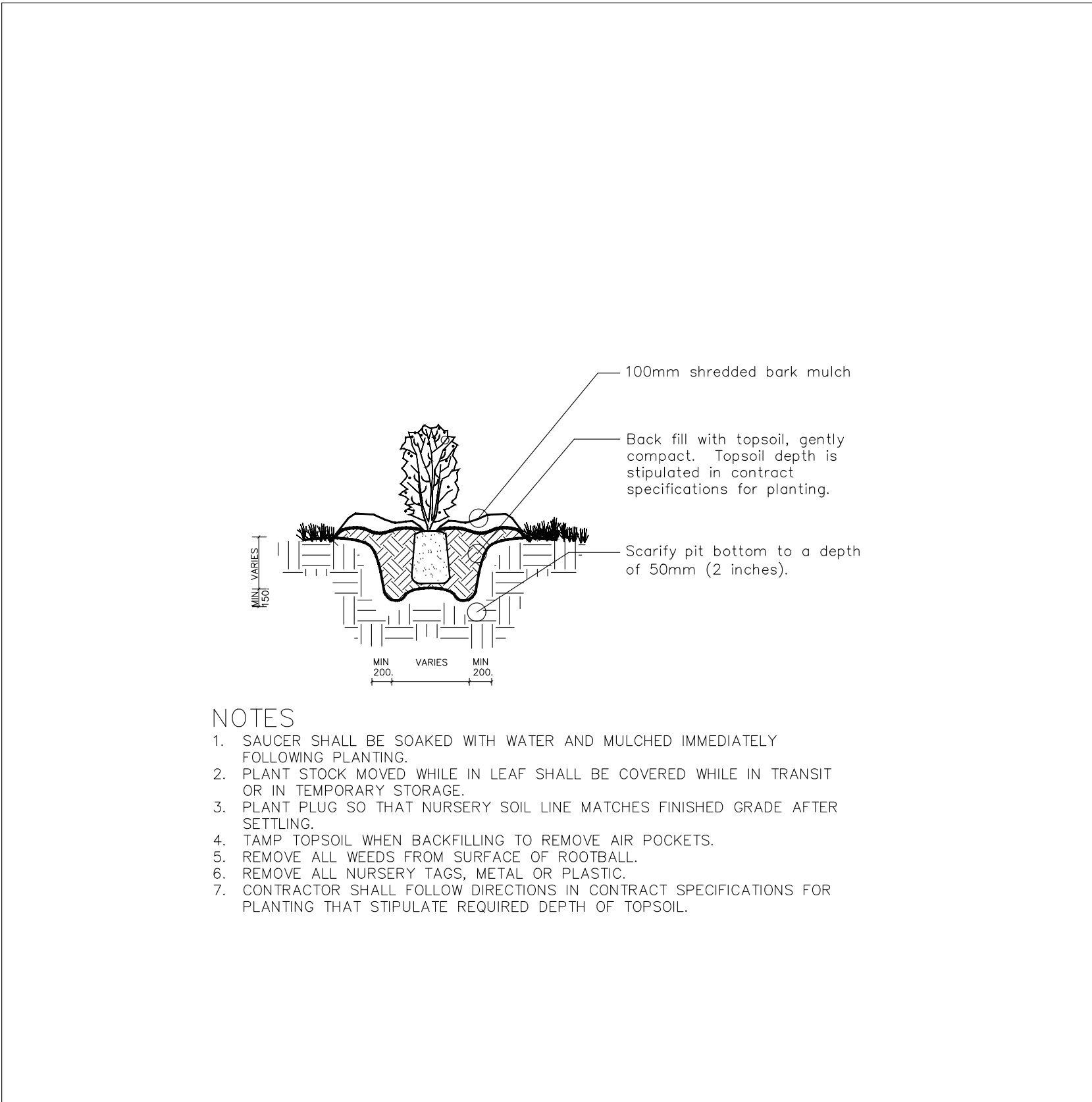
1 DECIDUOUS TREE – TYPICAL  
N.T.S.



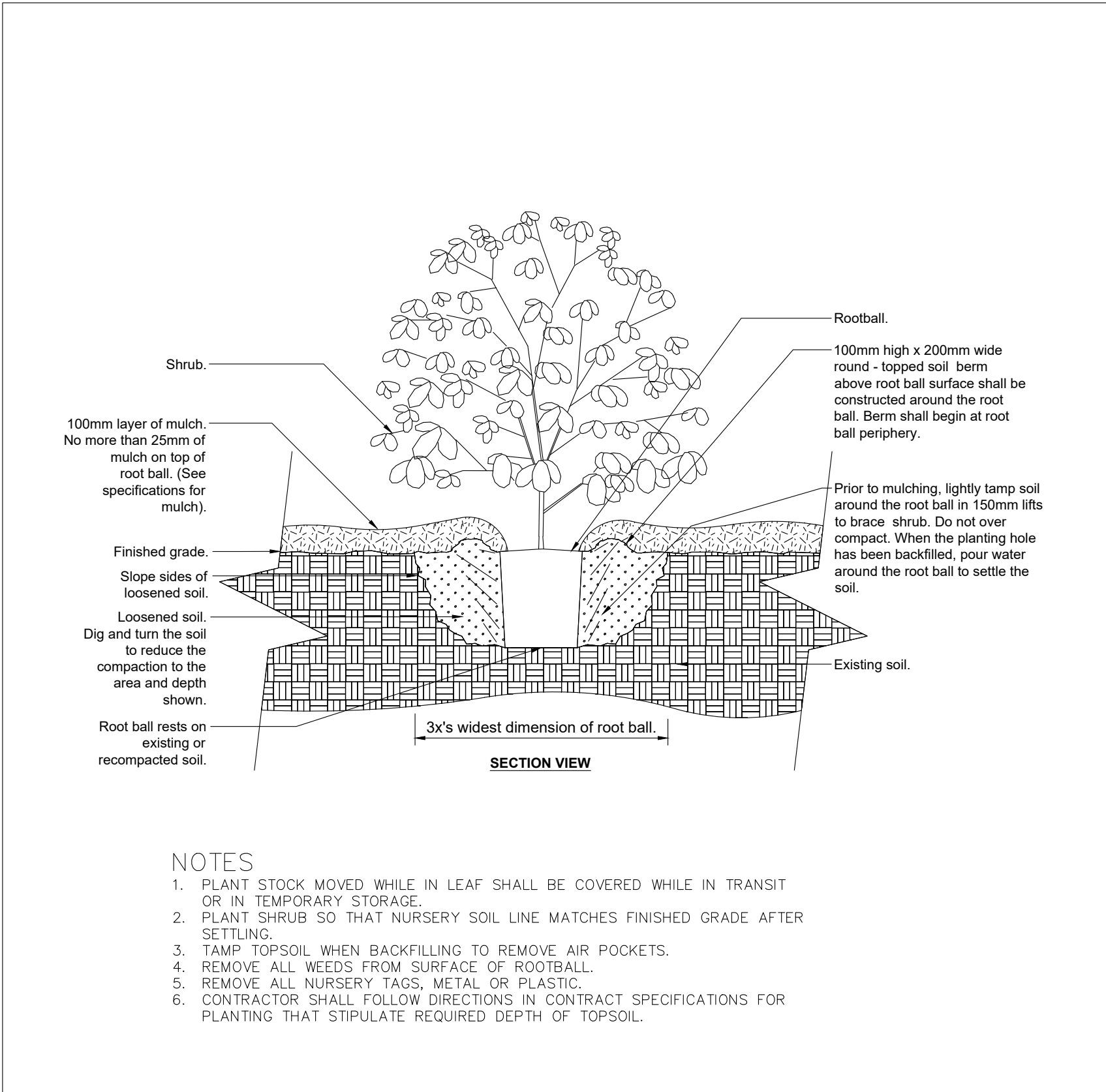
2 CONIFEROUS TREE – TYPICAL  
N.T.S.



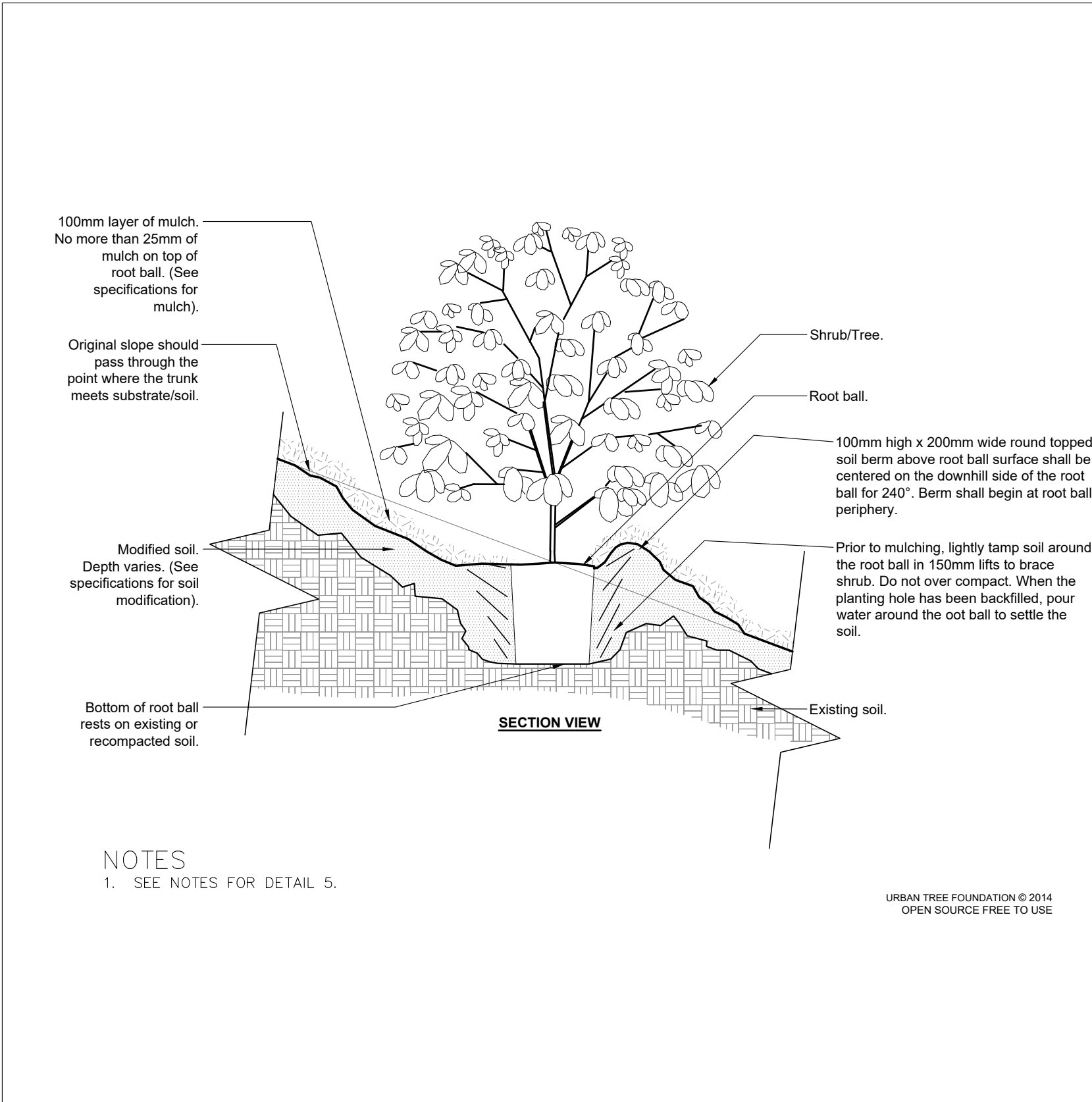
3 TREE STAKING – STAPLE  
N.T.S.



4 HERBACEOUS PLUG PLANTING – TYPICAL  
N.T.S.



5 SHRUB & TREE WHIP– TYPICAL  
N.T.S.



6 SHRUB & TREE WHIP ON SLOPE 5% (20:1) TO 50% (2:1)  
N.T.S.

x	xx	YYYY/MM/DD
No. Date	Description	

Revisions


PLANTING DETAILS

Project:ST. DAVID'S

Client: POLOCORP INC.

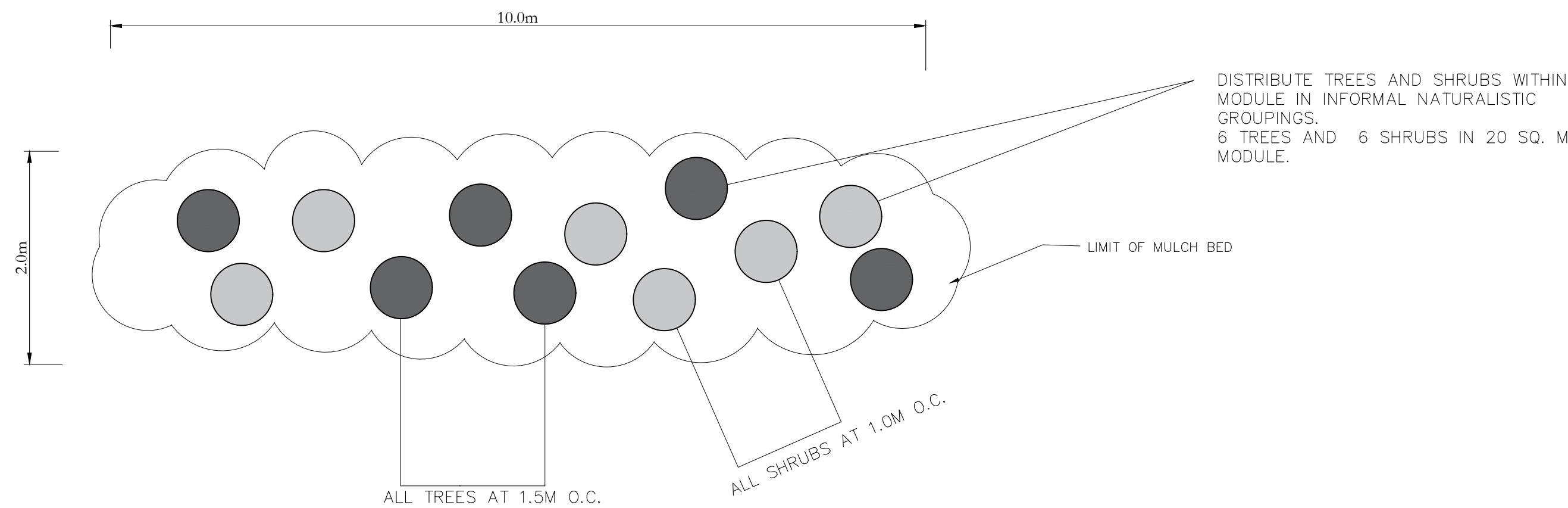


North	Date: 2025/02/20
	Scale: N.T.S.
	Drawn By:LD
	Checked By:NAME

Figure Number:

D1

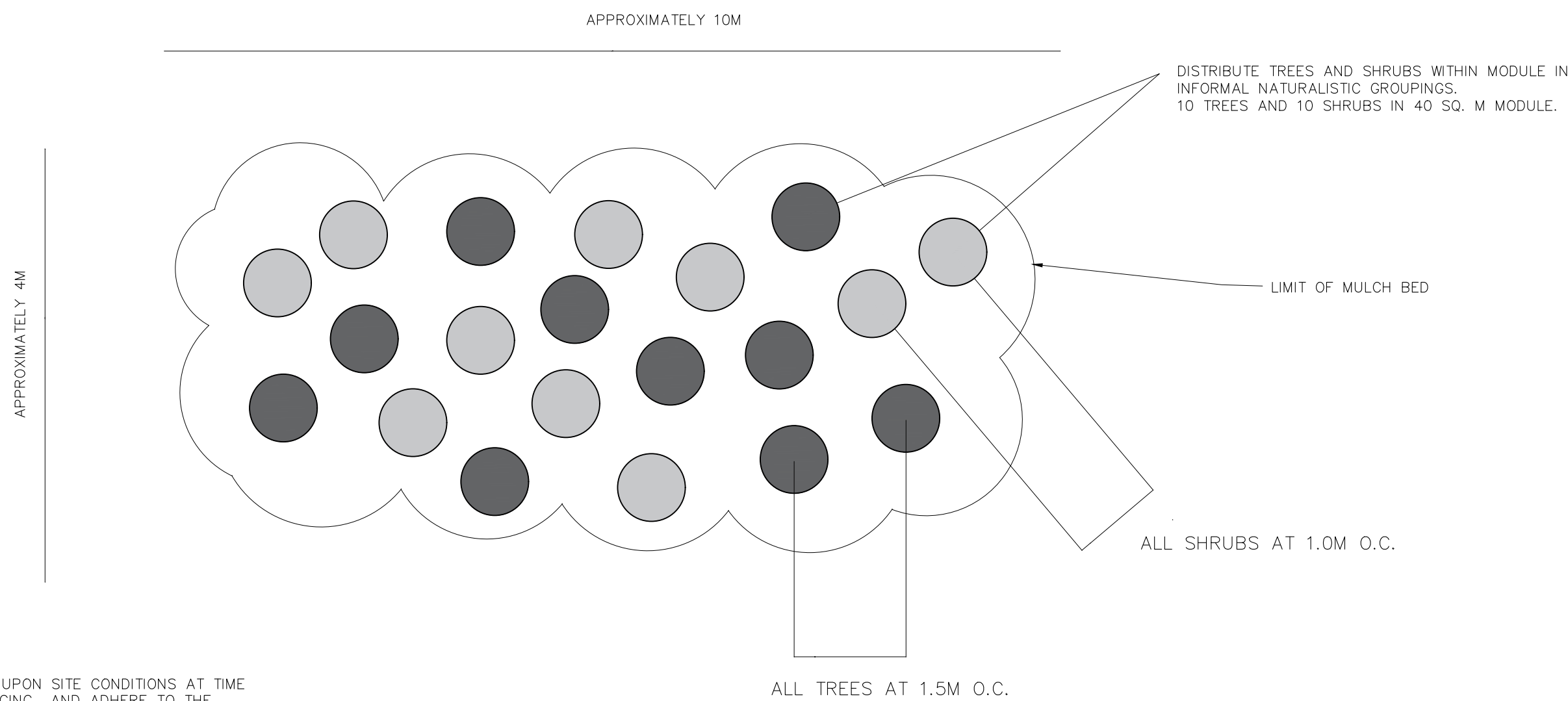
PLAN VIEW OF ZONE 3 PLANTING MODULE  
12 PLANTS PER MODULE – COMBINATION OF TREES AND SHRUBS



- NOTES
1. THE ACTUAL PHYSICAL LOCATION OF EACH PLANT WILL DEPEND UPON SITE CONDITIONS AT TIME OF PLANTING. ACTUAL SITE CONDITIONS MAY REQUIRE MODIFICATION TO THE PLANT MATERIAL LOCATIONS AS SHOWN. THE CONTRACTOR SHOULD RESPECT THE PLANT GROUPINGS, AND SPACING AND ADHERE TO THE DESIGN INTENT WHEN LAYING OUT THE PLANT MATERIAL LOCATIONS.
  2. ALL PLANTING MODULES SHALL CONSIST OF SHRUBS PLACED 1.0 M O.C. AND TREES PLACED AT 1.5 M O.C.
  3. REFER TO TABLE 4 ON SHEET L1 FOR PLANT MATERIAL DESCRIPTIONS.
  4. INSTALL INDIVIDUAL SHRUBS AND TREES ACCORDING TO THE PLANTING DETAILS ON SHEET D1.
  5. IT IS THE CONTRACTOR'S RESPONSIBILITY TO LOCATE ALL UNDERGROUND UTILITIES PRIOR TO DIGGING.
  6. ANY FIELD ADJUSTMENTS OR MATERIAL SUBSTITUTIONS MUST RECEIVE THE PRIOR APPROVAL OF THE CONTRACT ADMINISTRATOR.
  7. MULCH BED TO BE UNIFORM DEPTH OF 100MM.

7 ZONE 3 MODULE PLANTING LAYOUT  
N.T.S.

PLAN VIEW OF ZONE 4 PLANTING MODULE  
20 PLANTS PER MODULE – COMBINATION OF TREES AND SHRUBS



- NOTES
1. THE ACTUAL PHYSICAL LOCATION OF EACH PLANT WITHIN THE MODULE WILL DEPEND UPON SITE CONDITIONS AT TIME OF PLANTING. THE CONTRACTOR SHOULD RESPECT THE PLANT GROUPINGS AND SPACING AND ADHERE TO THE DESIGN INTENT WHEN LAYING OUT THE PLANT MATERIAL LOCATIONS.
  2. ALL PLANTING MODULES SHALL CONSIST OF SHRUBS PLACED 1.0 M O.C. AND TREES PLACED 1.5 M O.C.
  3. REFER TO TABLE 5 ON SHEET L1 FOR PLANT MATERIAL DESCRIPTIONS.
  4. INSTALL INDIVIDUAL SHRUBS AND TREES ACCORDING TO THE PLANTING DETAILS ON SHEET D1.
  5. IT IS THE CONTRACTOR'S RESPONSIBILITY TO LOCATE ALL UNDERGROUND UTILITIES PRIOR TO DIGGING.
  6. ANY FIELD ADJUSTMENTS OR MATERIAL SUBSTITUTIONS MUST RECEIVE THE PRIOR APPROVAL OF THE CONTRACT ADMINISTRATOR.
  7. MULCH BED TO BE UNIFORM DEPTH OF 100MM.

8 ZONE 4 MODULE PLANTING LAYOUT  
N.T.S.

x	xx	YYYY/MM/DD
No. Date	Description	

Revisions


PLANTING DETAILS

Project:ST. DAVID'S

Client: POLOCORP INC.



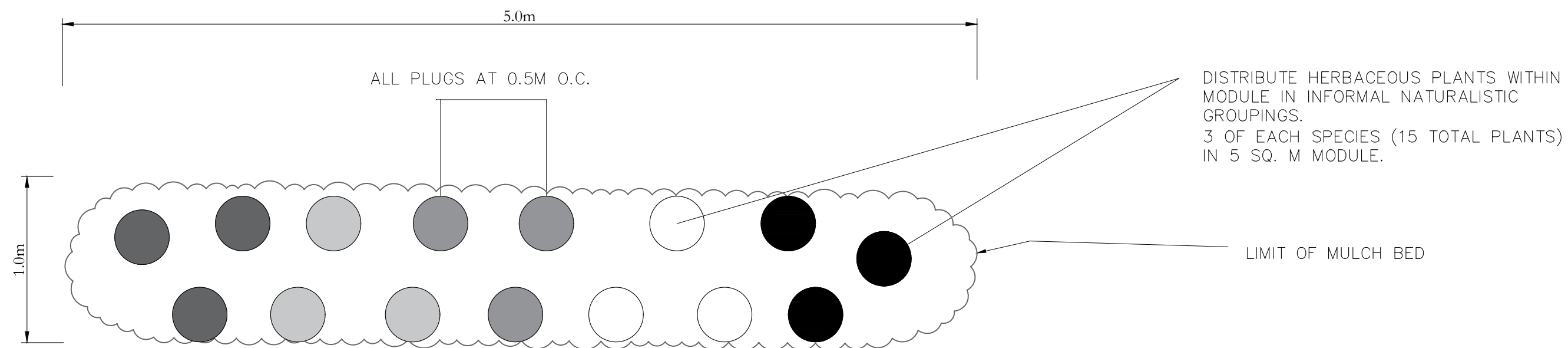
3-7 Edinburgh Rd South, Guelph, ON N1H 5N8  
www.dougan.ca

North	Date: 2025/02/20
	Scale: N.T.S.
	Drawn By: LD
	Checked By: NAME

Figure Number:

D2

PLAN VIEW OF ZONE 1 PLANTING MODULE  
15 PLANTS PER MODULE – HERBACEOUS



- NOTES
1. THE ACTUAL PHYSICAL LOCATION OF EACH PLANT WILL DEPEND UPON SITE CONDITIONS AT TIME OF PLANTING. ACTUAL SITE CONDITIONS MAY REQUIRE MODIFICATION TO THE PLANT MATERIAL LOCATIONS AS SHOWN. THE CONTRACTOR SHOULD RESPECT THE PLANT GROUPINGS, AND SPACING AND ADHERE TO THE DESIGN INTENT WHEN LAYING OUT THE PLANT MATERIAL LOCATIONS.
  2. ALL PLANTING MODULES SHALL CONSIST OF PLUGS PLACED 0.5 M O.C.
  3. REFER TO TABLE 3 ON SHEET L1 FOR PLANT MATERIAL DESCRIPTIONS.
  4. INSTALL INDIVIDUAL SHRUBS AND TREES ACCORDING TO THE PLANTING DETAILS ON SHEET D1.
  5. IT IS THE CONTRACTOR'S RESPONSIBILITY TO LOCATE ALL UNDERGROUND UTILITIES PRIOR TO DIGGING.
  6. ANY FIELD ADJUSTMENTS OR MATERIAL SUBSTITUTIONS MUST RECEIVE THE PRIOR APPROVAL OF THE CONTRACT ADMINISTRATOR.
  7. MULCH BED TO BE UNIFORM DEPTH OF 100MM.

x	xx	YYYY/MM/DD
No. Date	Description	

Revisions

--	--

PLANTING DETAILS

Project:ST. DAVID’S

Client: POLOCORP INC.



<div>North</div>	Date: 2025/02/20
	Scale: N.T.S.
	Drawn By:LD
	Checked By:NAME

Figure Number:

D3