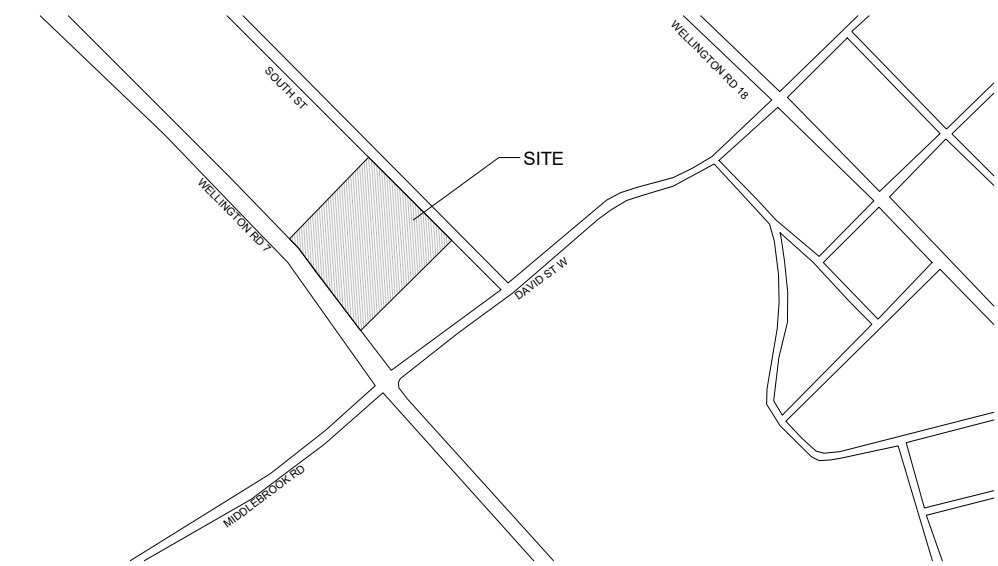
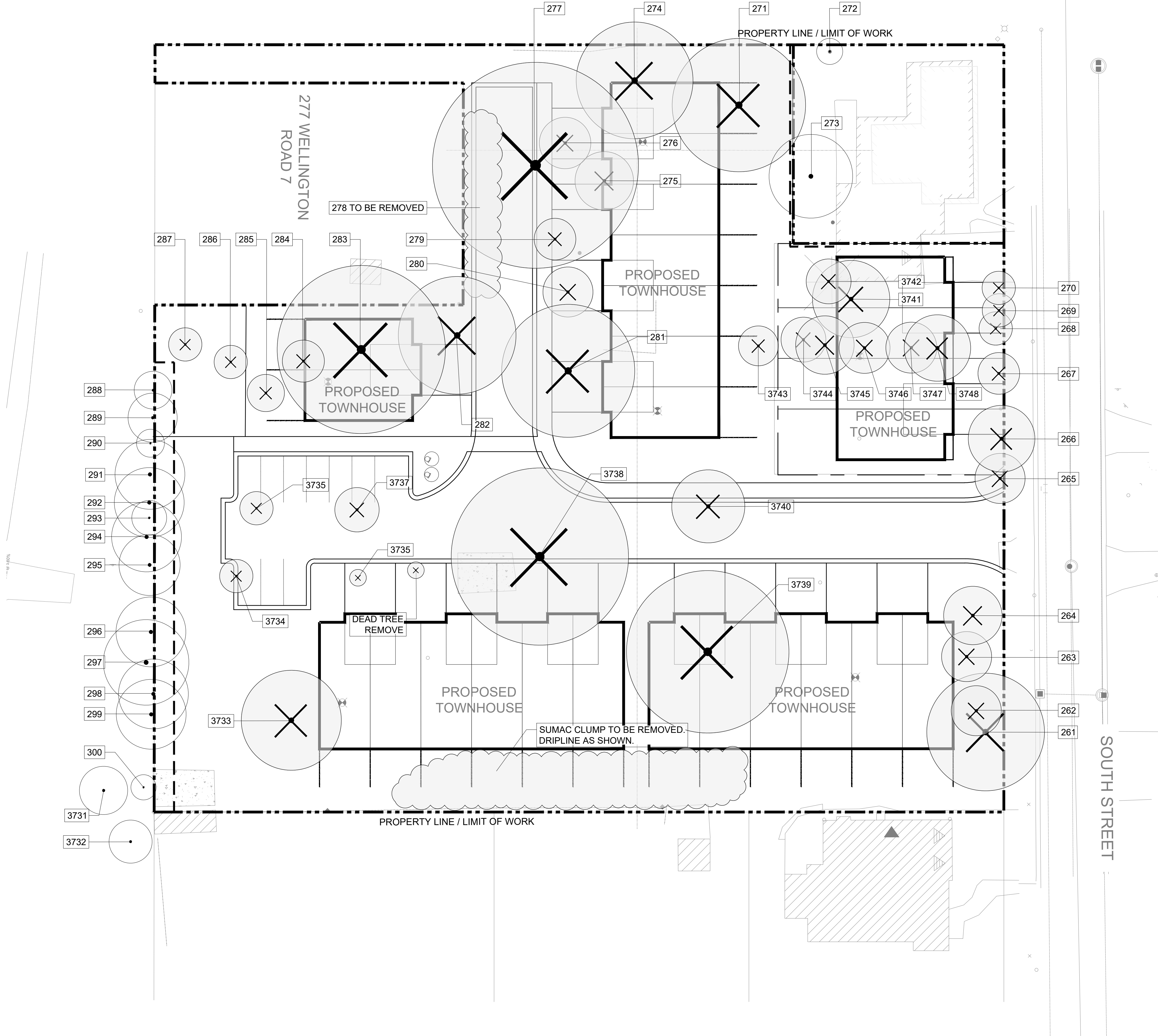


P:\2025\21 - 101 and 200 South Street, Elora - Landscape\2025 Drawings\242211\_L001.dwg



Key Map Not to scale

Reference Notes

1. Base drawings provided by James Keating Construction Ltd.
2. Survey provided by James Keating Construction Ltd, received on Oct 15, 2025.
3. Vegetation inventory prepared by Gsp Group.
4. Refer to Civil drawings prepared by others for grading and servicing information.
5. Refer to Electrical drawings prepared by others for lighting information.

Legend

- EXISTING TREES TO BE PRESERVED
- X EXISTING TREES TO BE REMOVED
- TREE PROTECTION FENCING
- ### TREE TAG NUMBER

All Drawings, Specifications and Related Documents are the Copyright Property of the Landscape Architect and must be returned upon request.

Drawings shall not to be used for construction unless authorized by the Landscape Architect.

**James Keating Construction Ltd**  
70 Matheson St.

Client

Issued		
Date	Description	By
2025.10.31	Issued for Review	ES

NOT FOR  
CONSTRUCTION

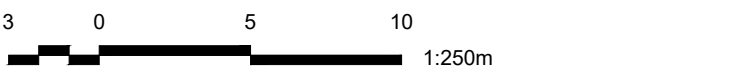
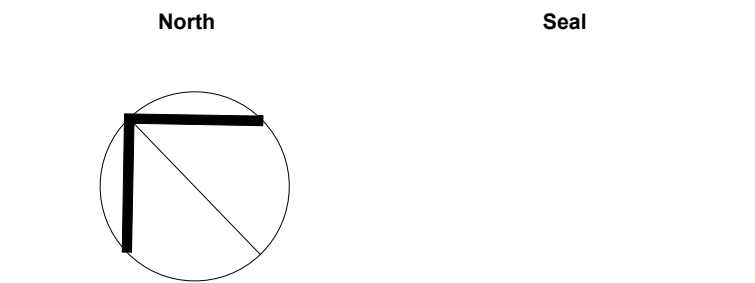
General Notes

1. Contractor shall report any discrepancies between the drawings and site conditions prior to commencement of the work.
2. All utility locates are the responsibility of the Contractor. Hand dig within the limits recommended by the Service Utility Provider. Utility conflicts with proposed tree locations must be reported immediately to the Landscape Architect.
3. Landscape drawings show engineering information for design purposes only. Do not construct engineering works from these drawings.

**191 Wellington Road 7 & 290 South Street**

290 South Street, Elora, ON  
File No.: 24221

Project Information



Scale: As Shown Do not scale drawings

Project No. 24221 Checked By: ES  
Date: 2025.10.16 Drawn By: JR

**VEGETATION  
MANAGMENT PLAN**

Drawing Name

**L001**

Drawing No.

Table 1 City of Guelph tree protection zones

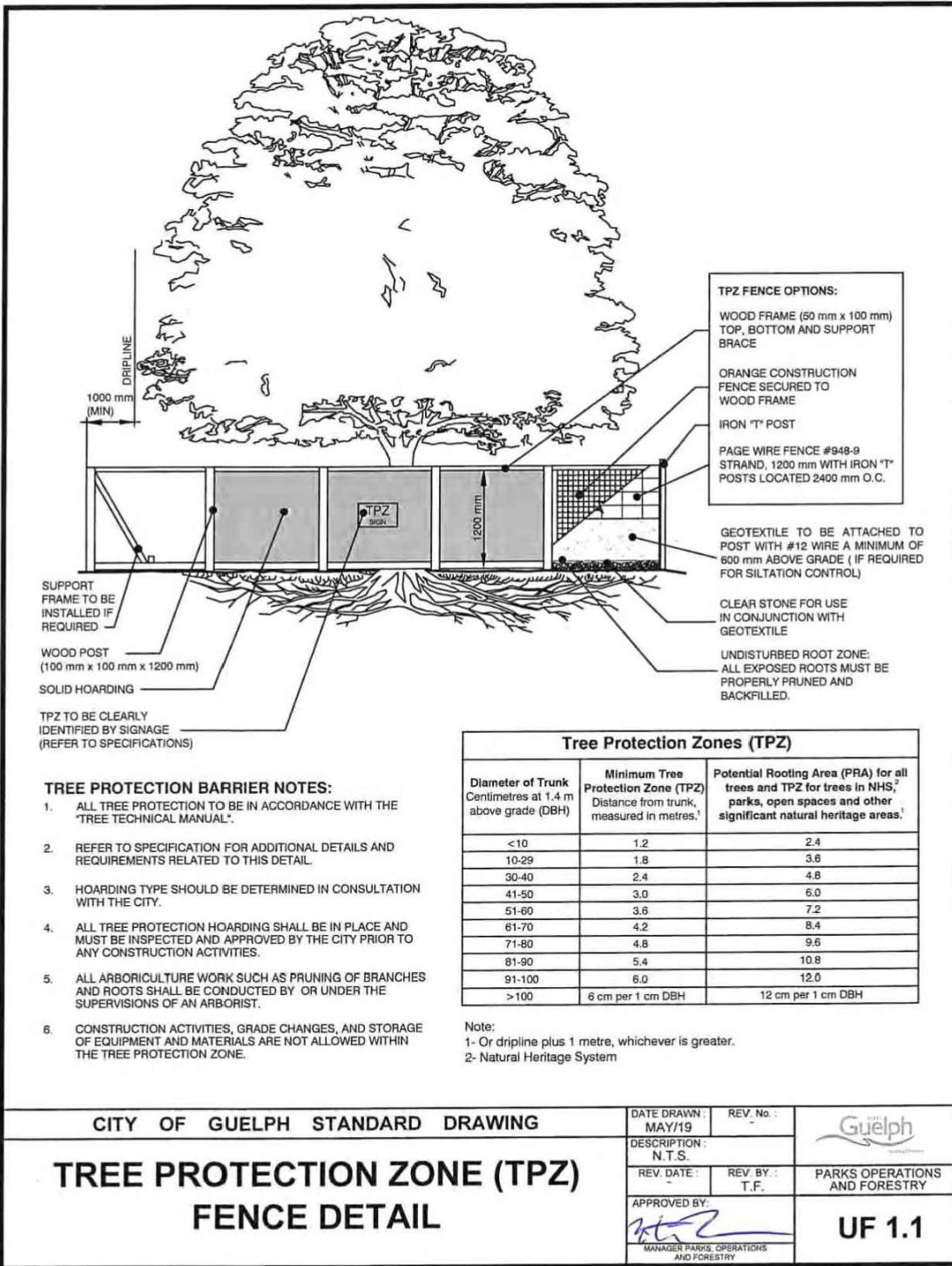
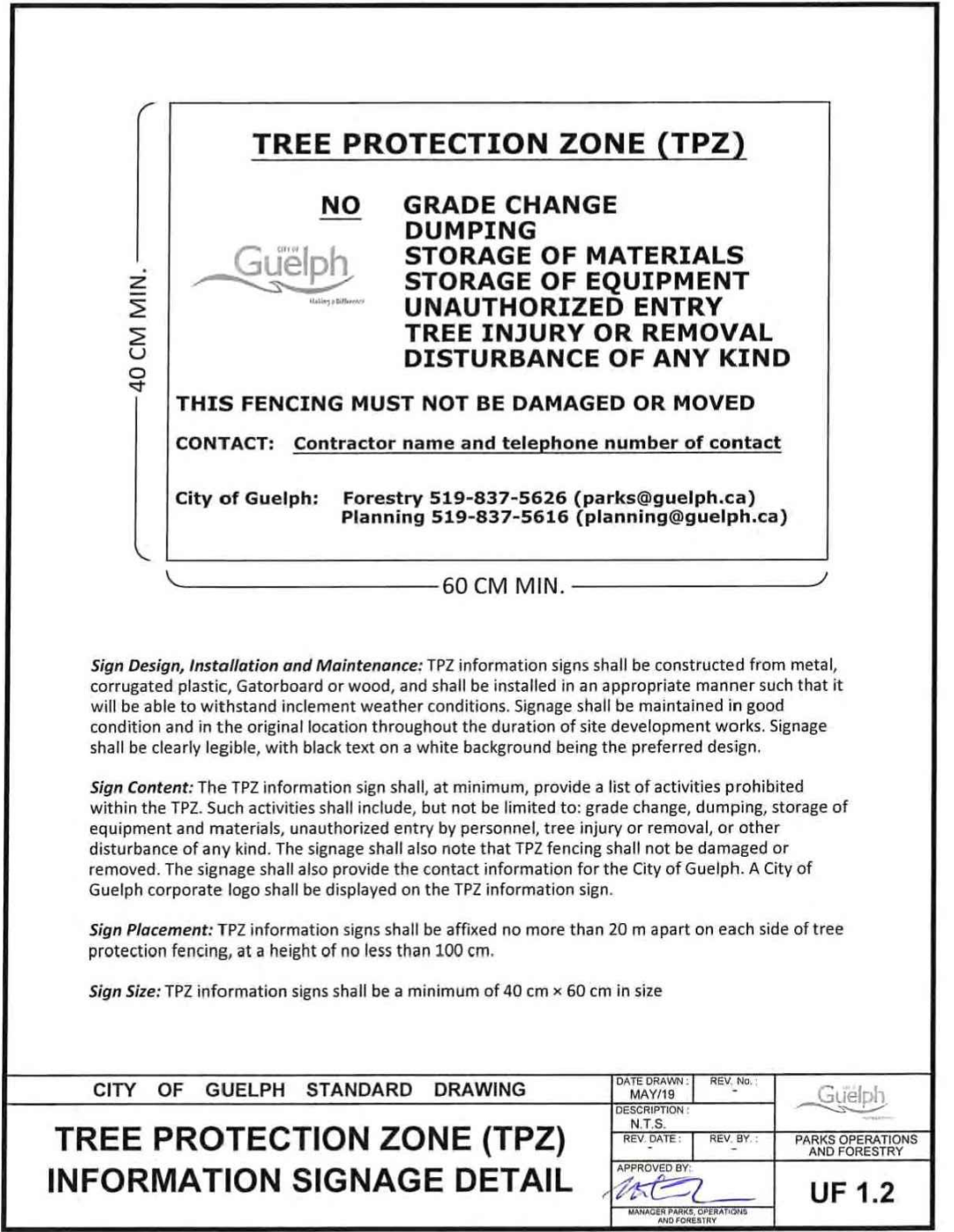
Diameter of Trunk, Centimetres at 1.4 m above grade (DBH)	Minimum Tree Protection Zone (TPZ), Distance from trunk, measured in metres. <sup>1</sup>	Potential Rooting Area (PRA) for all trees, and TPZ for trees in NHS, parks, open spaces and other significant natural heritage areas. <sup>1,2</sup>
< 10	1.2	2.4
10-29	1.8	3.6
30-40	2.4	4.8
41-50	3.0	6.0
51-60	3.6	7.2
61-70	4.2	8.4
71-80	4.8	9.6
81-90	5.4	10.8
91-100	6.0	12.0
> 100	6 cm per 1 cm DBH	12 cm per 1 cm DBH

Notes:

1. Or dripline plus 1 m whichever is greater.
2. Works in PRA are subject to guidelines and standards outlined in [Section 4](#) of this document.

Encroachment of the TPZ should be avoided. However, in circumstances where this cannot be avoided, the area of encroachment should be determined and the work supervised by an Arborist with approval from the City.

Tree Inventory												
Site Date: October 9th, 2025												
Field Personnel: Emily Sicilia, Jack Rudnicki												
Tree locations approximated in field												
# = tagged by others												
Tree No.	Botanical Name				Location							Comments
					Stems	DBH (cm)	Dripline Radius (m)	Municipal Property	Subject Property	Shared	Adjacent Property (6m to PL)	
261	<i>Juglans nigra</i>				2	40/20	7				P	P Remove
262	<i>Juglans nigra</i>				1	45	3				F	P Remove
263	<i>Juglans nigra</i>				1	40	3				P	P Remove
264	<i>Juglans nigra</i>				1	28	3.5				P	P Remove
265	<i>Thuja occidentalis</i>				1	90	3				F	P Remove
266	<i>Thuja occidentalis</i>				1	90	4				F	F Remove
267	<i>Thuja occidentalis</i>				1	50	2.5				P	P Remove
268	<i>Thuja occidentalis</i>				1	60	2				F	F Remove
269	<i>Acer saccharum</i>				1	12	2				P	P Remove
270	<i>Acer saccharum</i>				1	13	2				F-P	P Remove
271	<i>Tree clump</i>				12	10 to 40	8				F	F Remove
272	<i>Abies Sp.</i>				1	12	1.5				G	G Protect
273	<i>Picea abies</i>				1	50	5				G	G Protect
274	<i>Acer rubrum Clump</i>				5	10 to 12	7				G	G Remove
275	<i>Acer rubrum</i>				3	15/20/25	3.5				G	G Remove
276	<i>Acer platanoides</i>				3	15	3				G	G Remove
277	<i>Salix Sp.</i>				13	10 to 20	12				F	F Remove
278	<i>Cedrus Sp. Clump</i>				1	10 to 15					F	F Remove
279	<i>Juglans nigra</i>				1	12	2.5				F	F Remove
280	<i>Acer saccharinum</i>				1	38	3				F	P Remove
281	<i>Juglans nigra</i>				1	40	8				F	F Remove
282	<i>Juglans nigra</i>				1	30	7				F	F Remove
283	<i>Salix Sp.</i>				4	15 to 40	10				F	F Remove
284	<i>Abies Sp.</i>				1	30	2.5				F	F Remove
285	<i>Picea abies</i>				1	20	2				F	F Remove
286	<i>Picea abies</i>				5	40	2				F	F Remove
287	<i>Acer saccharum</i>				1	40	2				G	F Remove
288	<i>Cedrus Sp.</i>				1	50	2				F	F Protect
289	<i>Cedrus Sp.</i>				1	45	3				P	P Protect
290	<i>Cedrus Sp.</i>				1	40	1				P	P Protect
291	<i>Cedrus Sp.</i>				1	60	4				F	P Protect
292	<i>Cedrus Sp.</i>				2	60/60	4				F	P Protect
293	<i>Cedrus Sp.</i>				1	70	2				F	P Protect
294	<i>Cedrus Sp.</i>				1	50	4				F	P Protect
295	<i>Cedrus Sp.</i>				1	60	3.5				F	F Protect
296	<i>Cedrus Sp.</i>				1	50	4				F	F Protect
297	<i>Cedrus Sp.</i>				2	50/50	5				F	P Protect
298	<i>Cedrus Sp.</i>				1	45	4				F-P	F Protect
299	<i>Cedrus Sp.</i>				1	45	4				F-P	F Protect
300	<i>Juglans nigra</i>				1	20	1.5				F	P Protect
3731	<i>Acer saccharinum</i>				1	30	3				F	P Protect
3732	<i>Juglans nigra</i>				1	17	2.5				G	G Protect
3733	<i>Juglans nigra</i>				1	29	6				F	F Remove
3734	<i>Malus Sp.</i>				1	60	2				P	P Remove
3735	<i>Malus Sp.</i>				1	35	2				P	P Remove
3736	<i>Malus Sp.</i>				1	25	1				P	P Remove
3737	<i>Malus Sp.</i>				2	25/25	3				P	P Remove
3738	<i>Acer saccharinum</i>				1	60	12				F	F Remove
3739	<i>Acer saccharinum</i>				1	120	11				G	F Remove
3740	<i>Juglans nigra</i>				1	25	5				F	F Remove
3741	<i>Acer saccharinum</i>				2	25/25	4.5				G	F Remove
3742	<i>Picea abies</i>				2	54/40	2.5				F	F-P Remove
3743	<i>Acer saccharum</i>				1	12	2				P	P Remove
3744	<i>Acer saccharum</i>				1	27	2.5				G	F Remove
3745	<i>Acer saccharum</i>				1	26	3.5				G	F Remove
3746	<i>Acer saccharum</i>				1	25	30				G	F Remove
3747	<i>Acer saccharum</i>				1	25	3				G	F Remove
3748	<i>Acer saccharum</i>				2	23/22	4				G	F Remove



All Drawings, Specifications and Related Documents are the Copyright Property of the Landscape Architect and must be returned upon request.

Drawings shall not to be used for construction unless authorized by the Landscape Architect.

**James Keating Construction Ltd**  
70 Matheson St.

Client

Issued

Date	Description	By
2025.10.31	Issued for Review	ES

NOT FOR CONSTRUCTION

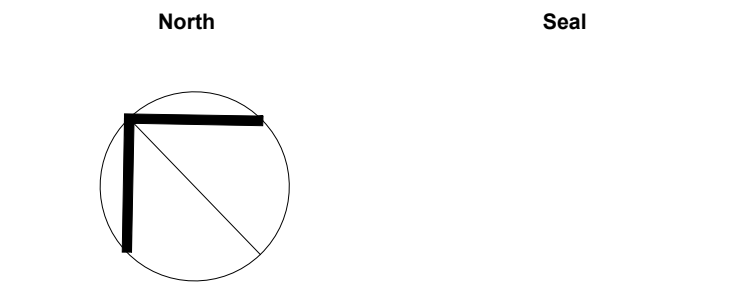
#### General Notes

1. Contractor shall report any discrepancies between the drawings and site conditions prior to commencement of the work.
2. All utility locates are the responsibility of the Contractor. Hand dig within the limits recommended by the Service Utility Provider. Utility conflicts with proposed tree locations must be reported immediately to the Landscape Architect.
3. Landscape drawings show engineering information for design purposes only. Do not construct engineering works from these drawings.

**191 Wellington Road 7 & 290 South Street**

290 South Street, Elora, ON  
File No.: 24221

Project Information



Scale: As Shown Do not scale drawings

Project No. 24221 Checked By: ES  
Date: 2025.10.16 Drawn By: JR

**Drawing Name**

Drawing Name

**L002**

Drawing No.